

Technical data

Machine type		MTF750/160	MTF1500/250	MTF2500/400
Clamp unit				
Opening stroke	mm	450	500	580
Opening between plates	mm	600	700	830
Clamping force	kN	1590	2500	4120
Opening force	kN	59	74,6	128,7
Closing speed	mm/sek	365	365	250
Opening speed	mm/sek	250	169	160
Min. Mould height	mm	150	200	250
Heating platens, std.	mm	450 x 510	500 x 630	710 x 800
Injection unit				
Max. Injection volume	cm ³	750 / 1000	1500 / 2000	2500 / 3200
Max. Injection pressure	bar	1900 / 1410	1980 / 1500	1917 / 1500
Max. injection capacity	cm ³ /sek	78 / 105	74 / 99	120 / 155
Screw diameter	mm	32	42	52
Screw length	L/D	10 D	9 D	9 D
Screw speed, max.	rpm	200	135	105
Plasticizing capacity	cm ³ /min	600	940	1050
Temperature zones		3	3	3
Electric equipment				
Motor rating	kW	7,5	7,5	22
Heating plates	kW	9,4	14	25,8
Control voltage	V	24V=	24V=	24V=
Connected load	kW	20	25	55
Temperature zones total		5	5	5
Hydraulic unit				
System pressure	bar	225	220	210
Pump output	l/min	42	42	65
Set-up area	m ²	3,4	3,6	4,2
Machine dimensions	L/W/H mm	2190/1568/2842	2350/1540/3360	2680/1575/3715
Machine weight	kg	5000	9000	14200

Subject to technical modifications



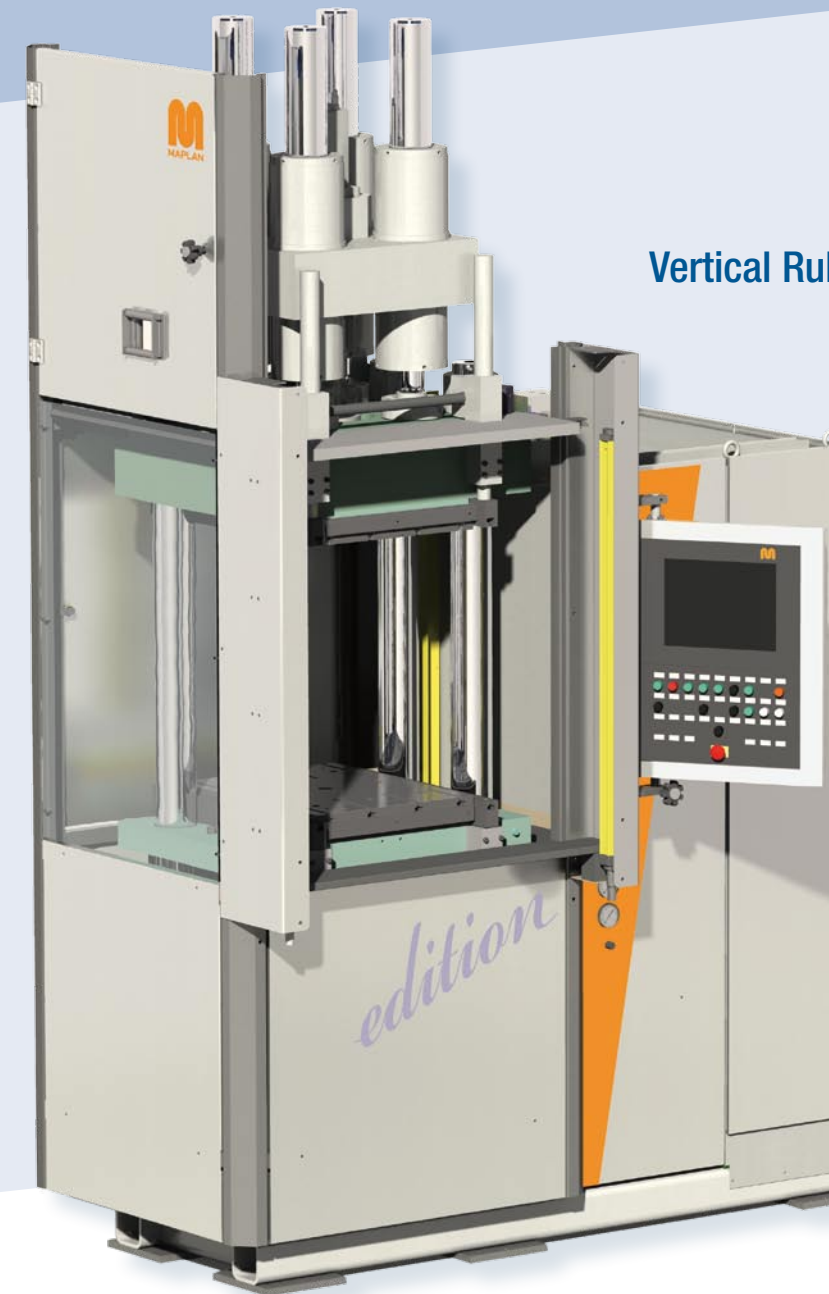
MAPLAN Maschinen u. techn. Anlagen
Planungs- u. Fertigungs-Ges.m.b.H.
Schoellergasse 9
A-2630 Ternitz

Tel. ++43/2630/35 7 06-0
Fax ++43/2630/35 4 08
sales@maplan.at
www.maplan.at

YOUR PARTNER FOR
RUBBER INJECTION MOULDING SYSTEMS



MAPLAN



Vertical Rubber Injection Moulding Machines

- Minimal floor space required
- Compact full hydraulic clamping system
- MAPLAN FIFO Rubber injection unit with short nozzle



European machine quality at an excellent price/performance relation
Designed, manufactured and built in Europe

YOUR PARTNER FOR
RUBBER INJECTION MOULDING SYSTEMS



MAPLAN

MAPLAN *edition*



MTF1500/250 *edition*

Vertical Rubber Injection Moulding Machines

Machine series MAPLAN *edition*

The machine series MAPLAN *edition* in vertical – full hydraulic design with the original MAPLAN FIFO rubber injection unit represents the optimum of productive efficiency and ergonomics in production of rubber- and rubber-combination parts.

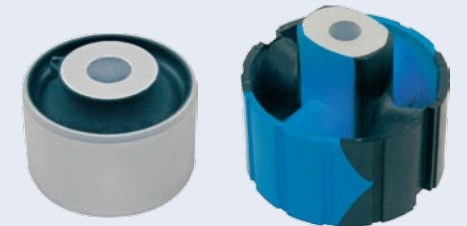
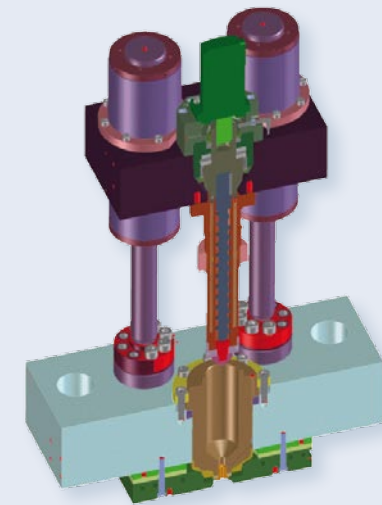


MTF750/160 *edition*

- MAPLAN FIFO rubber injection unit with short, cooled nozzle for high precision and injection capacity, easy cleaning
- Robust parallel, full hydraulic clamping system
- Compact design for minimal required floor space and easy machine transport
- Large heating platen and daylight for more cavities and easy demoulding
- Energy saving hydraulic pump with fast reactions and proportional pressure / flow control
- Optimized heating platen and self-optimizing temperature controller for constant temperature distribution in the mould.
- Machine covers with integrated light shield for highest safety and ergonomics
- Maintenance-free, contactless safety contactors
- Encoder with high-resolution for best reproducibility
- Latest control technology with 15,4" Touch Screen for easiest operation
- Flexible upgradeable with machine- and control features

MAPLAN FIFO Rubber injection unit

- FIFO injection unit concept
- Short nozzle for max. injection pressure directly on the mould
- Cooled nozzle – no nozzle lift required
- Easy material change via moveable check valve
- Adjustable back pressure function
- Oil temperature control for plasticising unit, injection pot and nozzle
- Constant screw length to diameter ratio



Machine control PC5000touch

Uncompromising control technology in connection with full graphic displaying on a 15,4" Touch Screen complete the all-over concept of the machine series MAPLAN *edition*.

Through the continuing use of the multitasking processor technology combined with the new intuitive touch screen operation panel new horizons in optimisation of the injection moulding process are opened. The dynamic multifunctional alarm- and diagnostic field offers an overview in every situation.



Features of the control PC5000touch:

- User interface with "Touchscreen" function
- 15" screen size
- Selector switch for easier operation, mechanical execution
- Free, graphical cycle definition
- Intuitive user guiding – easiest operation
- Trendgraph – function with multiple signal curves
- Comprehensive alarm-, help- and diagnostic system
- Integration of the documentation and drawings in the control surface
- Network interface for central data storage on the company network
- USB stick for easy data storage and access authorisation
- Self-optimizing temperature controller for all heating and cooling zones.
- Current control (Option)
- 3-zone heating platen control (Option)

For further control features please have a look at the control advertising sheet.